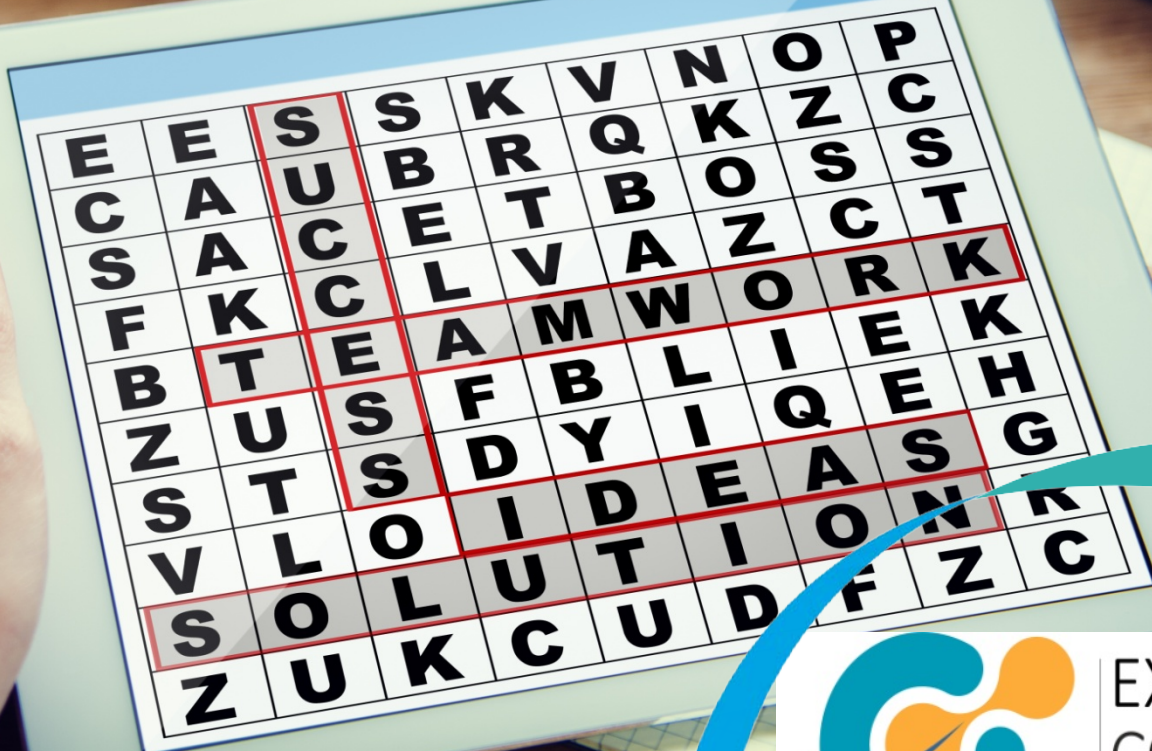


# PARTNERING WITH EXEMPLARY



EXEMPLARY  
CONSULTANTS

*Exemplifying Excellence*

# CONTENTS

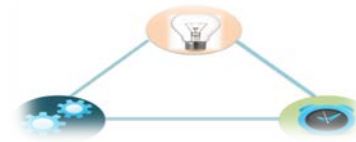
- **Surpassing Barrier**
- **Why Exemplary Consultants?**
- **Meet the Core Team**
- **Our People**
- **Global Presence of Associated Enterprise**
- **Service Offerings**
- **Experience**
- **Our Approach**
- **Wrapping Up for a new beginning**
- **Disclaimer**
- **To know where you can make a mark**



EXEMPLARY  
CONSULTANTS

*Exemplifying Excellence*

# SURPASSING BARRIER



- Its beyond what the caption suggests... “Chartered Accountants”; we have expertise in an array of professional services including management consulting services.
- As the world is converging into a single global entity, technology is blurring the lines between geographies, services and solutions. And in this era of a flat, borderless world, Exemplary Consultants is committed to going beyond service, into value addition in the true sense of the word.
- We create relationships rather than just sale of services;
- We believe in providing out of box solutions and not just answers;
- We appreciate the fact that there is another point of view also;
- We aim to set realistic customer expectations and then not just meet them, but surpass them, in an unexpected helpful manner.



EXEMPLARY  
CONSULTANTS<sub>3</sub>

*Exemplifying Excellence*

# WHY EXEMPLARY CONSULTANTS ?

---



At Exemplary Consultants our organization is committed to delivering measurable value—and for a brand striving to be the standard of excellence—we have put in place specific success measures to help assess our collective performance. The Group distinguishes itself from other advisory service providers in participating in the implementation process as well. The people of our Kolkata, GIFT City offices work together as a cohesive team. And in all our work, it's the people and unique culture of ECPL that truly set us apart from other business consulting firms.

Exemplary Consultants exemplifies the passion of its partner and team of professionals to deliver extraordinary client satisfaction.



EXEMPLARY  
CONSULTANTS

*Exemplifying Excellence*

# MEET THE CORE TEAM



## **Jayesh Gupta (FCA, LLB)**

He is a renowned faculty and expert in the field of taxation including international taxation. With over 20 years of experience, he has advised national as well as multi-national manufacturing, trading and service entities on multifarious Direct and Indirect Tax issues during his association with the PWC & KPMG. A visiting faculty at XLRI Jamshedpur, Direct Taxes Training Institute (NACEM).



## **Hitesh Shah (CMA)**

Mr. Hitesh Shah, based in Dubai, UAE, Bachelor of Commerce and Certified Management Accountant (Australia). He has a strong accounting and financial market experience of more than 25 years and has been actively involved in providing accounting and financial consultancy services for setting up businesses in UAE locally, Free zones and offshore entities in British Virgin Islands, Isle of Man, Mauritius etc. With a strong background on the policy and rules within the UAE, Hitesh has facilitated in offering knowledge to various free zones on their policies, operations and new business model. Mr. Hitesh also has experience for opening in excess of 5000 companies from small SME's to large Multi Nationals.



## **Niraj Harodia (FCA, ACS)**

He is a visiting faculty in GMCS and has convened various conferences and seminars. Over 10 years of experience in Direct, Indirect Tax, financial, assurance and advisory services. He was associated with Deloitte as well prior to practice.



EXEMPLARY  
CONSULTANTS

*Exemplifying Excellence*

# MEET THE CORE TEAM



## **Vivek Drolia (CA)**

A Chartered Accountant by qualification, he was the Director of leading regional SEBI registered entity for over a decade heading Trading and Clearing Member of All Leading National exchanges and has interest in various asset classes. He is a commerce graduate & Chartered Accountant and has over 19 years of experience offering high integrity, professional service to its investor base. Risk management, business development, profitability of funds, research on global products are the main core focus areas. He has vast knowledge of different asset class including commodities, OTC products, equity, FX, derivatives, so on and so forth. Further, he expertise includes Financial Restructuring of Companies, International Financial Instruments, International Taxation, Equity and Investment deployment, so on and so forth.



## **Roshan Bajaj (FCA, CIFRS)**

He has gained rich experience while working with large and mid-sized corporate across manufacturing and service sectors. Over 10 years of experience in Audit and Assurance, Corporate Laws, Management Consulting. He was associated with Deloitte for 7 years prior to practice.



EXEMPLARY  
CONSULTANTS

*Exemplifying Excellence*

# OUR PEOPLE

## - OUR STRENGTH...



Our professionals are passionate about our selected domain expertise. We collaborate to share knowledge, capitalizing on our collective expertise to provide high quality tailored advice that helps relieve the pressures associated with making complex decisions.

Our partners and senior professionals are acknowledged leaders in their chosen areas of expertise, ensuring that you adhere both to best practice and to prevailing law at all times. We are independent, hence not diverted by audit-led conflict checks, enabling us to deliver practical advice in a responsive, timely manner.

With a well-established global presence today, Exemplary has understanding of overseas markets, corporate culture and business mindsets.



EXEMPLARY  
CONSULTANTS

*Exemplifying Excellence*

# GLOBAL PRESENCE OF ASSOCIATED ENTERPRISE



One of our key strength is the presence of our directors on a global level through various entities they represent. Our directors and promoters have branches of their associated enterprises in India as well as in foreign territories. The details of branches of their associated firms are as follow:

## PRESENCE IN INDIA

- Gandhinagar
- Kolkata
- Dhanbad
- Bengaluru
- Delhi
- Mumbai
- Varanasi
- Assam
- Rudrapur
- Siliguri
- Raniganj

## OVERSEAS PRESENCE

- Dubai
- Belgium
- Hong Kong
- Mauritius
- Moscow



EXEMPLARY  
CONSULTANTS

*Exemplifying Excellence*



# SERVICE OFFERINGS



## Taxation Services

- Direct Tax Services & Compliance
- Indirect Tax Services & Compliance
- Assessment & Litigation
- Transfer Pricing
- International Tax Services

## Corporate Finance

- Preparation of Project Report
- Support Services
- Preparation of quarterly reports for Banks

## Advisory Services

- Risk Consulting
- Internal Control
- Deal Advisory
- Accounting Advisory



EXEMPLARY  
CONSULTANTS

*Exemplifying Excellence*

# SERVICE OFFERINGS



## Debt & Equity Funding

- Business Plan/ Project Report preparation
- Capital Structuring and syndication based on the Funding requirement, through Private Equity, Venture Capitalists or High Net worth Individuals.
- Loan syndication - Fund/ Non-Fund based funding from Banks and Institution
- IPO/GDR/Placement planning and actual implementation

## Financial Industry

- Customized support and views on capital and financial markets
- Regular updates through SMS and Mails
- Dedicated Research Analyst to serve individual needs
- Technical Outlook and Forecast on capital & financial markets

## Other Services

- Assurance & Auditing
- Business outsourcing and Accounting Services
- Advisory and Support on consultancy and subscription to various equity and debt instruments leading to better corporate restructuring.
- Customized support and views on Commodity Markets



EXEMPLARY  
CONSULTANTS

*Exemplifying Excellence*

# EXPERIENCE



Infrastructure

Research & Development

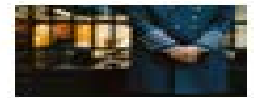


Chemicals



Oils & Refineries

Real Estate



Hospitality



Telecom



Apparels



Manufacturing



Banking



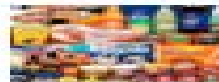
Financial Services



Dairy & Poultry



FMCG



EXEMPLARY  
CONSULTANTS

*Exemplifying Excellence*

# WRAPPING UP FOR A NEW BEGINNING..



Though the presentation may be over, it has opened new gates which can help us achieve the goal of service optimization and setting standards of integrity and professionalism.....

.....This presentation on Exemplary Consultants is gateway to an everlasting association....

**it's a journey towards a new beginning.....**



EXEMPLARY  
CONSULTANTS

*Exemplifying Excellence*

# DISCLAIMER !!!



- This presentation is only meant for limited circulation subject to the solicitation of the same by the Recipient.

If you have received this presentation without any specific request for the same, kindly inform us at [info@exemplaryconsultants.com](mailto:info@exemplaryconsultants.com)

- Exemplary Consultants is the owner of the copyright of the contents of this document. Any form of reproduction or transmission without the consent of Exemplary Consultants will amount to an infringement of copyright.

-The trademarks, logos etc. pertaining to third parties have been used for illustration purpose only & remain the exclusive property of their respective owners.



EXEMPLARY  
CONSULTANTS<sup>13</sup>

*Exemplifying Excellence*

# TO KNOW WHERE YOU CAN MAKE A MARK...



## Gandhinagar



A- 607, Vedica E-series, PDPU Road,  
Bhajibura, Gandhinagar-382007



07698019062 /09007313049



[ankushbajaj@exemplaryconsultants.com](mailto:ankushbajaj@exemplaryconsultants.com)

## Kolkata Office



Shaila Towers, Room # 903, J1/16 EP Block, Salt  
Lake, Kolkata- 700091



033-4004 2356(0) /983161 6161



[vivekdrolia@exemplaryconsultants.com](mailto:vivekdrolia@exemplaryconsultants.com)

## Kolkata Office



10 Bow Street, 2nd Floor Near Central Metro  
Station, Kolkata - 700 012



033-40050615 (0) /09051313322



[nharodia@exemplaryconsultants.com](mailto:nharodia@exemplaryconsultants.com),  
[roshanbajaj@exemplaryconsultants.com](mailto:roshanbajaj@exemplaryconsultants.com)

For further details visit our website:  
[www.exemplaryconsultants.com](http://www.exemplaryconsultants.com)



EXEMPLARY  
CONSULTANTS

Exemplifying Excellence

**WE ASPIRE TO GROW WITH YOU**  
**THANK YOU !!!**



**EXEMPLARY  
CONSULTANTS**

*Exemplifying Excellence*